

MedStore Plus Infinity Cart

Enhance ePMA and EPR with ease.



The MedStore Plus Infinity Cart never runs out of power and doesn't need to be plugged into a wall to charge with additional storage space.

Features

- Masses of configurable storage space
- RFID and manual door locking systems
- Door folds back to save space
- Easy to manoeuvre in tight spaces
- Cables concealed for infection control and security
- Display can tilt, swivel and rotate
- Dual hot-swappable batteries
- Low power 19 or 22" touch screen with Intel Quad-Core Processor
- Lightweight and durable design
- EN60601 Certified for Patient Safety
- Sealed unit for infection control
- Optional WiFi, RFID, Smart Card Reader, additional batteries and charging cradle

Benefits

- ISO 9001:2008 quality assured
- Carts are continually in use, leveraging investment
- Care-giving and workflow are not significantly interrupted
- Long run times and power when you need it
- Valuable space is no longer taken up by carts on charge
- Reduced IT Support intervention
- Large storage capacity with a small footprint

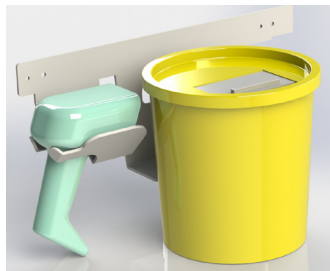
Applications

- Medication administration
- E-prescribing
- Phlebotomy
- Triage
- ICU

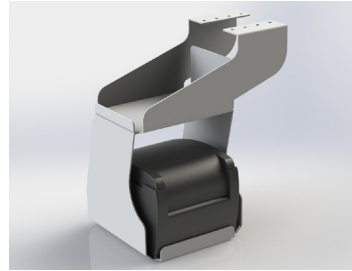
Accessories



Digi Lock



Scanner & Sharps Bin



Printer Bracket

MedStore Plus Infinity Cart

Enhance ePMA and EPR with ease.

Display

Size	19 inch or 22 inch
Resolution	1280 x 1024 or 1366 x 766
Max. Colours	16.7M
View Angle	170°(H)/160°(V) or 178°(H)/178°(V)
Contrast ratio	1000:1 or 3000:1
Brightness	350nits or 250nits
Touch Screen	5-Wire Resistive Touch Screen
Sensor	Light Sensor
Processor	Intel® 1.88GHz N2800 Dual Core
System Memory	Support DDR3 SODIMM up to 4GB
Chipset	NM10
OS Support	Windows® 7 (32 bit)
Security	Smart Card Reader x 1 (optional)
Wireless Communication	802.11 b/g/n Bluetooth 2.1 + EDR RFID (optional)
Speaker	2W x 2
Function	Power On/Off, LCD Brightness Up, LCD Brightness Down, Touch Screen On/Off, Reading Light On/ Off.
USB	4KV Isolated USB 2.0 x 1, USB 2.0 x USB 3.0 x 2
COM	4KV Isolated RS-232 x 1
Ethernet	4KV Isolated Gigabit LAN x 1
Video Out	Display Port x 1
Audio	Mic - in x 1, Audio-out x 1

Cart

Work Surface	Large enough to accommodate a full size keyboard and mouse, yet maintains a small overall footprint.
Manoeuvring	Contoured handle for ease of manoeuvre.
Storage	Large volume of configurable storage space. Different depths of trays, sample holders, bottle holders, lids separate compartments and more are available.
Drawers	All drawers 'stop' to prevent unintended removal of drawers.
Power Supply	Plug located on desk surface so user can easily see when the cart is still plugged in. Reduces risk of cart being damaged if pulled away whilst still charging.
Door	Door folds completely back to save space when in use.
Wheels	4x wheels (2 Locking)
Mouse Tray	The mouse tray can be used in either a left or right position.

Security

Key lock	This can be suited to Hospital/Ward for easy key management. Economical solution.
RFID lock	Available on powered carts only. Maintenance free. future proof. Easily managed.
Keypad lock	Keyless entry. changeable entry codes. Durable. Easily managed.

Medically Certified

EN60601	EN60601 Certified Power Supply.
Infection Control	No External fittings. No Visible vents.

Dimensions

Across Work Surface	685mm
Front to Back Work Surface	630mm
Floor to Work Surface	1050mm High
Weight	63.8k

Battery Management

Battery Type	6 Cell Lithium Battery
Battery Capacity	5800 mAh
Battery Output Voltage	10.8V
Battery Charge Time	2.5 hour
Battery Run Time	4~6.25 hour
Battery Capacity Indicator	
Alarm	Low Capacity, Battery Temperature

Mechanical and Environmental

Power Requirement	AC100 V~240V. DC24V
Operating Temperature	0°C ~ 40°C (32°F ~104°F)
Storage Temperature	-20°C ~ 60°C (-4°F ~ 140°F)
Storage Humidity	10%~95% @ 35°, non-condens- ing
Degree of Protection	Front Panel IP-65 Certified, IP x 1
System Cooling	Fan-less
Net Weight	5.5kg (12.13lb)
EMC	CE/FCC Class B, UL-60601-1, EN-60601-1